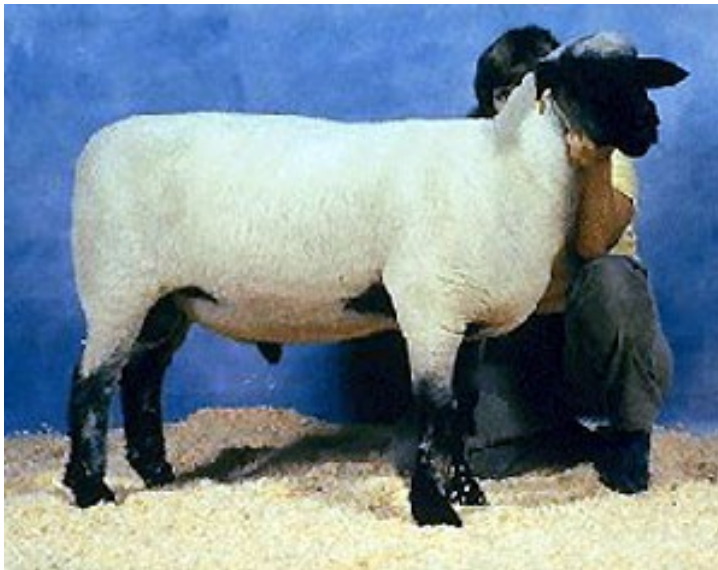




# Sheep



## Question 1



What breed is this?

- A. Hampshire
- B. Suffolk

- C. Dorset
- D. Southdown



## Question 2



What breed is this?

- A. Hampshire
- B. Suffolk

- C. Dorset
- D. Southdown



## Question 3



What disease is the biggest problem in the sheep industry that affects the central nervous system and has no known cure?

A. Influenza

B. Tuberculosis

C. Pseudorabies

D. Scrapies



## Question 4

What is this?



- A. Hair Brush
- B. Curry Comb

- C. Fluffer Comb
- D. Carding Brush



## Question 5



What is the oil called in the fleece of sheep?

- A. Lanolin
- B. Bees Wax

- C. Oil
- D. Linseed



## Question 6



What cut of meat is this?

A. Brisket

B. Leg of lamb

C. Roast

D. Lamb Chop



## Question



What cut of meat is this?

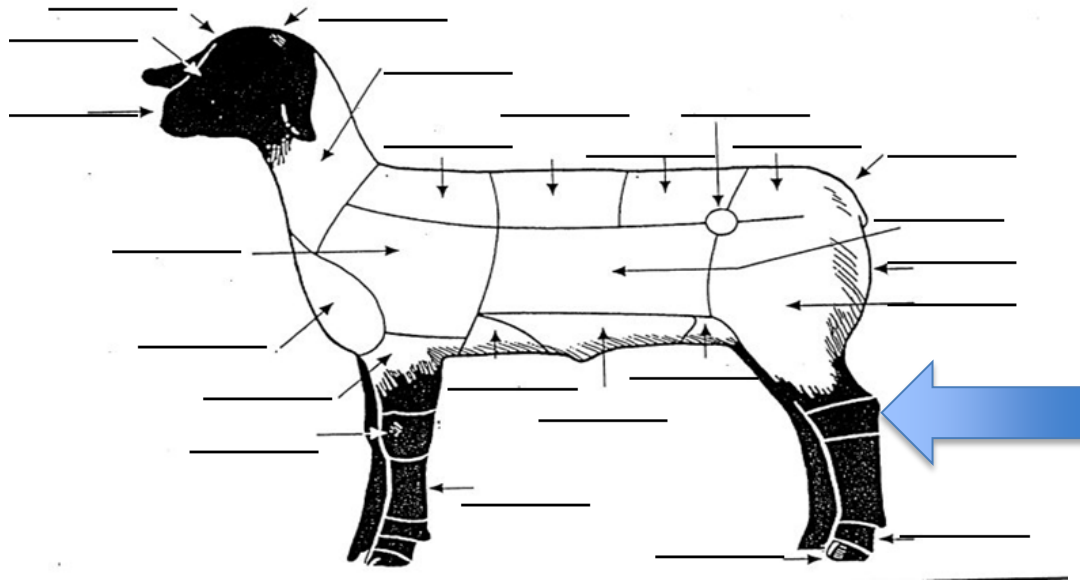
- A. Brisket
- B. Leg of lamb

- C. Roast
- D. Lamb Chop





## Question 8



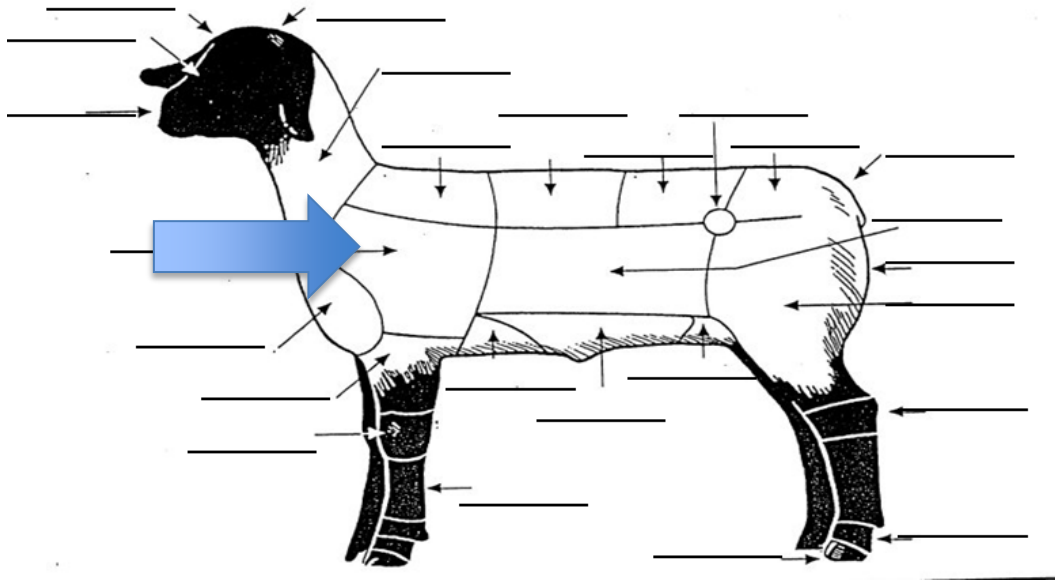
What part is this?

- A. Belly
- B. Dock

- C. Rear Flank
- D. Hock



## Question 9



What part is this?

- A. Neck
- B. Loin

- C. Shoulder
- D. Elbow



## Question 10

What is the gestation period for a pregnant ewe?



- A. 2 months
- B. 3 months

- C. 4 months
- D. 5 months



## Question 11

What is the normal temperature range for a sheep?



- A. 101-102° F
- B. 102-103° F

- C. 103-104° F
- D. 104-105° F



## Question 12

What is a health problem that can impact the hoof of a sheep?



A. Foot rot

B. Foot and Mouth

C. Athletes Foot

D. Sore Mouth



## Question 13

What is an intact male called?



- A. Wether
- B. Boer

- C. Ewe
- D. Ram



## Question 14

What is this tool?



- A. Clamps
- B. Shearer

- C. Clippers
- D. Elasticator



## Question 15

What is a toxic mineral for sheep?



- A. Iron
- B. Potassium
- C. Magnesium
- D. Copper





## Question 16

What is the dressing percentage of a lamb carcass?



- A. 30-35%
- B. 40-45%

- C. 50-55%
- D. 60-65%



## Question 17

What is the average amount of backfat for a finished lamb?



- A. .2 inches
- B. .3 inches

- C. .4 inches
- D. .5 inches



# Question 18



## What type of injection?

- A. Oral
- B. Intramuscular
- C. Subcutaneous
- D. Eyedrops



## Question 19

What is the top producing state for sheep and lamb?



- A. Wyoming
- B. Colorado

- C. New Mexico
- D. Texas



## Question 20

If a ewe was bred on July 12th, when would you expect her to lamb?



- A. Beginning of January
- B. Middle of January

- C. Beginning of February
- D. End of February



## Question 21

What is the average daily gain for a market lamb?



A. .4-.8 pounds

B. .75-1.0 pounds

C. 1.2-1.4 pounds

D. .8-1.0 pounds



## Question 22

What is the top producing state for wool?



A. Texas

B. Colorado

C. New Mexico

D. Wyoming



## Question 23

Name the four chambers of the sheep's stomach.



- A. Rumen, pyloric, omasum, abomasum
- B. Rumen, reticulum, omasum, saccus caecus
- C. Rumen, reticulum, saccus caecus, abomasum
- D. Rumen, reticulum, omasum, abomasum





# Question 24

How many pounds of sheep feed pellets should a ram consume during breeding season?

**SOUTHERN STATES**  
**SHEEP FEED PELLETS (CN)**

A SUPPLEMENT FEED FOR GROWING AND MATURE SHEEP.

**Guaranteed Analysis**

Crude Protein (min.)	16.00	%			
Crude Fat (min.)	2.60	%	Salt (max.)	1.20	%
Crude Fiber (max.)	15.00	%	Sodium (min.)	0.40	%
Calcium (min.)	0.90	%	Sodium (max.)	0.90	%
Calcium (max.)	1.40	%	Selenium (min.)	0.30	ppm
Phosphorus (min.)	0.30	%	Vitamin A (min.)	4,800	IU/lb.
Salt (min.)	0.70	%			

**Ingredients**

Processed Grain By-Products, Grain Products, Plant Protein Products, Ground Limestone, Cane Molasses (with Propionic Acid, Sodium Benzoate, Potassium Sorbate as Preservatives), Roughage Products, Salt, Vegetable Oil, Sodium Selenite, Lecithin, Phosphoric Acid, Calcium Carbonate, Propionic Acid (A Preservative), Potassium Sulfate, Magnesium Sulfate, Magnesium Chloride, Propylene Glycol, Vitamin A Supplement, Vitamin D3 Supplement, Vitamin E Supplement, Natural and Artificial Flavors, Butyric Acid (A Preservative), Ammonium Hydroxide, Zinc Oxide, Manganous Oxide, Limonene, Mono/Di-glycerides, Ferrous Sulfate, Calcium Iodate, Cobalt Carbonate.

Tag Code: S3 180303

~MTIME ~LOT

**Feeding Directions**

**Market Lambs & Lambs for Breeding Purposes:** At about 2 weeks of age, creep-feed all the good quality forage and Sheep Feed Pellets they will eat. **Not recommended as the sole feed for rapidly growing ram lambs.**

**Ewes - Late Gestation:** Feed good quality forage and 0.5 to 1 lb. of Sheep Feed Pellets daily.

**Lactating Ewes:** Feed good quality forage and 2 to 2.8 lbs. of Sheep Feed Pellets daily.

**Rams:** During breeding season, feed good quality forage and 2 to 3 lbs. of Sheep Feed Pellets daily.

Vaccinate for enterotoxemia (overeating disease). Provide free access to clean, fresh water at all times. Follow the Southern States Mineral Program as recommended.

**CAUTION: Do not feed to goats.**

NOTE: Do not permit intake of supplemental selenium to exceed 0.3 ppm in the total ration.

For your safety, and that of your animals, always read and follow label directions and caution statements.

572610\_

PELLET

722304470241



Net Weight Shown on Bag / Invoice  
 Cargill Animal Nutrition, P.O. Box 5614, Minneapolis, MN 55440

- A. 0-1
- B. 1-2

- C. 2-3
- D. 3-4



## Question 25

What are 3 main priority traits to look for when selecting a market lamb?



A. Structural Correctness, Volume, Muscle mass

C. Ruggedness, balance, finish

B. Muscle, finish, cuteness

D. Structural Correctness, finish, balance



## Question 26



Which of the following is a bacterial fungus in sheep?

- A. Sore Mouth
- B. ASFV

- C. Bloat
- D. Scours



## Question 27

Weight gain divided by days on feed is known as...



A. Records

B. Pounds Gained

C. Rate of Gain

D. Price Per Pound of Gain



## Question 28



What is the name for a female sheep that has not lambed?

A. Insulin

B. Leather

C. Lotion

D. Football



## Question 29

What is the name for a female sheep that has not lambed?



A. Doe

B. Nanny

C. Ewe

D. Heifer



## Question 30



Best yield grade?

- A. Prime
- B. Select

- C. Choice
- D. Retail



## 2022 Michigan Skillathon - Sheep

1. What breed of sheep is this ram?  
(A) Hampshire
2. What breed of sheep is this?  
(C) Dorset
3. What disease is the biggest problem in the sheep industry that affects the central nervous system and has no known cure?  
(D) Scrapies
4. What is it?  
(C) Carding Brush
5. The oil called in the fleece of sheep  
(A) Lanolin
6. What cut of meat is this?  
(C) Roast
7. What cut of meat is this?  
(D) Lambchop
8. What part is this?  
(D) Hock
9. What part is this?  
(C) Shoulder
10. What is the gestation period for a pregnant ewe?  
(D) 5 months
11. What is the normal temperature range for a sheep?  
(B) 102-103o F
12. What is a health problem that can impact the hoof of a sheep?  
(A) Foot Rot
13. What is a castrated male called?  
(D) Ram
14. What is this tool?  
(B) Shearer
15. What is a toxic mineral for sheep?  
(D) Copper





## 2022 Michigan Skillathon - Sheep

16. What is the dressing percentage of a lamb carcass?  
(C) 50-55%
17. What is the average amount of backfat for a finished lamb?  
(B) 0.30 inches
18. What type of injection?  
(B) Intramuscular
19. What is the top producing sheep and lamb state?  
(D) Texas
20. If a ewe were bred on August 12th when would you expect that she lamb?  
(A) Beginning of January
21. What is the average daily gain for a market lamb?  
(A) .4-.8 pounds
22. What is the top producing state for wool?  
(A) Texas
23. Name the four chambers of the sheep's stomach.  
(D) Rumen, reticulum, omasum, abomasum
24. How many pounds of sheep feed pellets should a ram consume during breeding season?  
(C) 2-3
25. What are 3 main priority traits to look for when selecting a market lamb?  
(A) Structural Correctness, Volume, Muscle mass
26. Which of the following is a bacterial fungi in sheep?  
(A) Sore Mouth\*
27. Weight gain divide by days on feed is known as  
(C) Rate of gain\*
28. Which of the following are a by-product of sheep  
(C) Lotion\*
29. What is the name a female sheep that has not lambed?  
(C) Ewe\*
30. Best yield grade?  
(A) Prime\*

